

MATERIAL INFO TABLE
 BRICK: VENEER, MODULAR BRICK, 1.5"X3.5"X2-1/4", PELLINGTON BY BORAL BRICKS, INC.
 ADHERED STONE VENEER, NOMINAL 2"X4" RUNNING BOND PATTERN, LIMESTONE SCREEN/DI BLEND BY TEARS TEXTURED STONE
 HORIZONTAL THREE N BUFF GLAZED AS APPROVED BY ARCHITECT.
 EIFS: EIFS COLOR DRYPVAT 4495 BUCKSKIN, SAND FINISH WITH DRYPVAT FINISHES MESH D 32, HIGH DRYPVAT MESH ON ALL SURFACES, EIFS BY DRYPVAT SYSTEMS, INC.
 STOREFRONT AND CURTAINWALL: #4 CLEAR ANODIZED ALUMINUM FINISH GLASS, STOREFRONT AND CURTAINWALL SYSTEMS BY KNAISER COMPANY, INC.
 GLAZING: 1" INSULATED LOW-E GLAZING, 1/4" SOLARBAN TONE D7 ATLANTECA 1/4" CLEAR GLASS BY PPG INDUSTRIES.

NOTES: (FROM PDS)
 *THIS FACADE IS AN IS FOR CONCEPTUAL PURPOSES ONLY. ALL BUILDING PLANS REQUIRE REVIEW AND APPROVAL BY DEVELOPMENT SERVICES.
 *ALL MECHANICAL UNITS SHALL BE SCREENED FROM PUBLIC VIEW AS REQUIRED BY THE COMPREHENSIVE ZONING ORDINANCE.
 *WHEN PERMITTED, EXPOSED UTILITY BOXES AND CONDUITS SHALL BE PAINTED TO MATCH THE BUILDING.
 *ALL SIGNAGE AREAS AND LOCATIONS ARE SUBJECT TO APPROVAL BY DEVELOPMENT SERVICES.
 *ROOF ACCESS SHALL BE PROVIDED INTERNALLY, UNLESS OTHERWISE PERMITTED BY THE CHIEF BUILDING OFFICIAL.



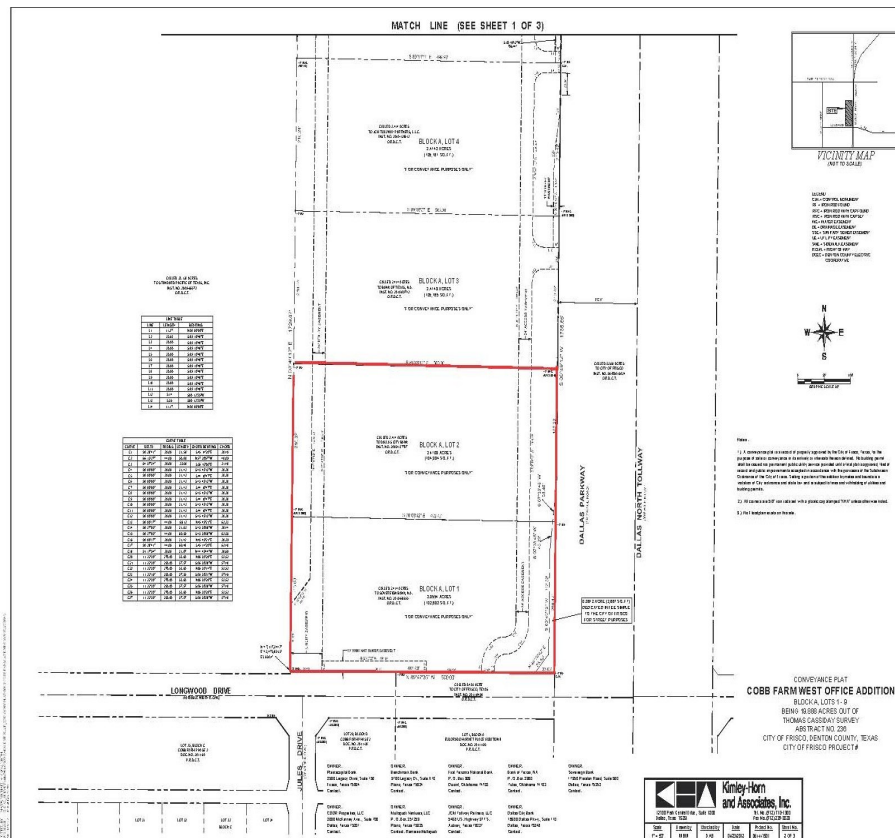
ELEVATION-01

COBB FARM WEST OFFICE ADDITION, BLOCK A, LOTS 1-9
 SCALE: 1/8"=1'-0" | JOB#: 1031 | ISSUE DATE: 04/20/21
 APPROVED BY: [Signature] DATE: [Signature]



COBB FARM WEST OFFICE ADDITION FRISCO, TEXAS
 HIGHLAND COLONY WEST

- ⇒ 2 Separately Platted Land of 2.36 and 2.41 Acres
- ⇒ Zoned Office Building of up-to 5 Stories High
- ⇒ Walking Distance to Retails and Restaurants
- ⇒ Easy Access and Excellent Visibility to Dallas North Tollway



Ari Besefki

214-662-1941

Ari@OpportuneCRE.com



Murali Nair

972-890-8363

Murali@OpportuneCRE.com

FOR SALE

4.77 ACRES

NWC DALLAS NORTH TOLLWAY & LONGWOOD DR, FRISCO, TX



DEMOGRAPHICS:	1 Mi	3 Mi	TRAFFIC COUNT:	VPD
Population	1,645	49,067	Dallas North Tollway	13,650
Median HH Income	\$132,098	\$118,055	Panther Creek Parkway	16,885
Population Growth '17-'22	20.20%	15.90%		

Ari Besefki

214-662-1941

Ari@OpportuneCRE.com

Murali Nair

972-890-8363

Murali@OpportuneCRE.com

